



## NP17525 Pathfinder 5" Rear Installation Instructions

### Included Components

2 - Rear IRS Drop Brackets	6 - 14mmx 40mm Bolts	6 - 1/4" Nylock Nut
2 - Main Support Brackets	12 - 14mm SAE Flat Washers	8 - 3/8" x 3.5" Bolts
1 - Hose Bracket	12 - 14mm Lock Washers	16 - 5/16" Flat Washer
1 - Spare Tire Stop Bracket	6 - 14mm Nut	8 - 3/8" Metal Lock Nut
1 - Strap Bracket	6 - 1/4" x 3/4" Bolts	2 - 10mm x 25mm Bolt
2 - Braided Brake Lines	12 - 1/4" Flat Washer	2 - 10mm Lock Washers

1. Begin by removing both rear wheels from the vehicle.
2. Using jack-stands, support the entire IRS assembly as shown in the figure.
3. Remove both rear calipers keeping the brake line intact at this time. The line will be swapped at a later point.



4. Beginning on the drive's side, loosen and remove the two main bolts securing the stock IRS bracket to the frame. Moving forward, also loosen and remove the forward mount bolt as well. Retain all hardware for re-installation.



5. Locate and remove the upper bracket connected to the body found near the exhaust/driveshaft. Retain hardware for re-installation at a later point.



6. Locate and remove from stock bracketry all filler hose, vent tubes from the stock bracket as shown in the photo. These will be re-attached at a later point.



7. With the above steps completed, measure and properly lift vehicle frame 5" above stock suspension. At 5", the CALMINI supplied IRS drop bracket will properly fit in between the IRS and the frame of the vehicle.



8. Place the supplied bracket in the area between the frame and IRS.



9. Using the stock hardware, install into the factory frame holes and snug. Do not tighten at this time.



10. With the bracket snug in place, using a transfer punch, transfer the four holes along the frame. The bracket can be left in place for drilling or removed from the vehicle to protect the powdercoat. Using a 3/8" drill bit, drill through the frame and all four locations.



11. Using the supplied 3/8" bolts, securely tighten the four bolts along the frame. Using the supplied 14mm hardware and the stock hardware removed earlier, bolt in the full bracket and tighten.

The process of fitment, transferring, and drilling will need to be completed on the passenger side of the vehicle as well.

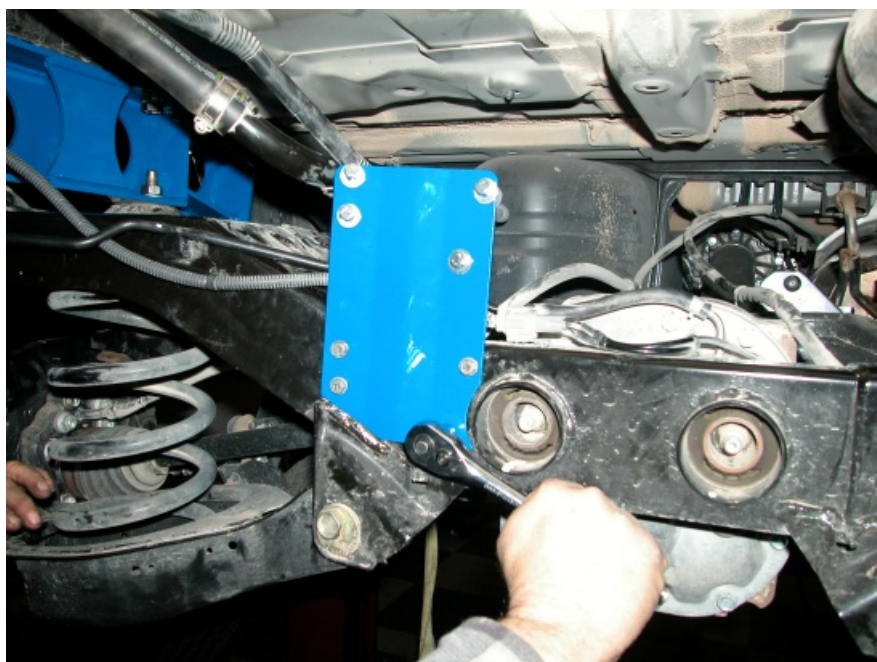


12. Using the remaining 14mm and stock hardware, itighten the forward bracket of the IRS as well.

With the driver side main IRS drop brackets installed, these steps should be followed on the passenger side completely. Make sure the vehicle and IRS remains properly support by jackstands or a floor jack



13. Locate and remove the stock spare tire stop bracket located to the left of the differential. Retain hardware for installation of the CALMINI supplied bracket. The stock bracket will be bolted to the top of our bracket using the supplied hardware.



14. Returning to the earlier removed bracket, install the CALMINI supplied spacer and re-attach using the stock and supplied hardware as shown in the photo.



15. Using the CALMINI supplied vacuum hose filler brackets and hardware, install to the upper portion of the frame as shown in the picture.



16. Remove and replace both stock soft brake lines with the new longer, CALMINI stainless units. Once new lines are properly installed and brake line keepers in place, the vehicle brake system will need to be bled per the factory service manual.

COMPLETED VIEW OF THE INSTALLATION

